

The Salvation Army will at during the coming year, it n  
(Continued On Page Two)



## Holy Family Seeks Property For New Church Structure

**Msgr. Anthony Di Luca Tells Town Commission Of Willingness To Purchase Land; Points Out That Facilities Are Too Small**

Msgr. Anthony Di Luca, pastor of Holy Family Church, in a letter addressed to the Town Commission, indicated that his parish is interested in purchasing property in the area of Grove and Mead Streets to build a new church.

In his letter, Msgr. Di Luca told of the definite need to provide a building site for a new church structure. He said, "Our present church building is inadequate for the needs of our growing congregation."

"Accordingly, we respectfully request that we be given the opportunity of getting this vacant land if it be now or in the future becomes the property of the town."

The church and auxiliary chapel have a combined seating capacity of about 1,000 persons. There are 18 Masses every Sunday.

Holy Family Church is particularly interested in land on Grove and Mead Streets. The present church building is located on Brookline Avenue and was built in 1938.

Two lots have already been acquired by private purchase. Holy Family Church, under the leadership of Msgr. Di Luca, has been growing with each passing year.

Holy Family observed the fifth year of its founding last October. The first Holy Family Church building was erected in 1911. As a church it accommodated 200 persons and was built at a cost of \$2,000.

## Dairy Tales

WE'LL TAKE OURS STRAIGHT, POPS. STRAIGHT FROM A BELLEVILLE FARMS MILK BOTTLE, THAT IS.



Whether your children prefer their milk straight with chocolate syrup - or milkshakes... you'll like our milk.



## Fatality

(Continued From Page One)

ing in her living room when a neighbor saw the child fall at 4:20 p.m. and called police.

Police theorized Stephen had climbed out of his crib and was near the window, when his sister on her bed, near the window, saw him.

The children apparently opened the window and Stephen pushed the screen out and fell, police said. Mrs. Wright told police the window was shut and the screen hooked when the children were placed in the bedroom.

## Chairmen

(Continued From Page One)

two major factions and several insurgent splinter groups, including some local also-runs, one had expected a room full of Republican votes. Let even the few who out party loyalty came to the polls issue no bones about it that they are getting increasingly more tired of the incessant wrangling between competing groups for the control of the Essex County GOP. The "Clean Government League" has deteriorated into a farce that nobody can take serious any longer.

When the new State Department of Taxation and Finance was organized out of eight former bureaus in 1944, Gov. Walter Edge appointed Mr. Zink as the first commissioner. He retained the title of controller, and was reappointed in 1947 by Gov. Alfred E. Driscoll. In that year he

**Help Yourself!**  
**Help Your Town!**  
join  
**The Citizens' Tax Council**



Mary Dely, R. N., president, School of Nursing Alumnae Association signs a \$250,000 check as a contribution toward the proposed \$750,000 Clara Maass School of Nursing and residence. Looking on and accepting the check are John F. Kiddle, seated, president, Board of Trustees and Henry C. Pfaff, general campaign chairman.

## Zink

(Continued From Page One)

also was named chairman of seating and finance for the state constitutional convention.

In 1948, when the treasury and taxation department were consolidated, Zink became director of the tax division. He was named to the Payroll Board by Gov. Driscoll in February 1949.

Mr. Zink, a native of Newark, lived in Belleville for the last 45 years. He was graduated from Barings High School and received his A.B. from Princeton University in 1905 and his LL.B. from New Jersey Law School in 1910. He was admitted to the bar in 1911 and as a counselor in 1915. He was also a special master in chancery and a Supreme Court commissioner.

In 1938 he was elected first president of the University of Newark Alumni Assn. and in 1944 served as president of the Robert Treat Council, Boy Scouts of America. He was a former vestryman of Christ Episcopal Church, Belleville; former trustee of the Belleville Community Chest and Essex Council of Churches; and a former director of the Belleville Chapter, American Red Cross.

He was a member of the Essex County and New Jersey Bar Association; Kane Lodge 55, F.&M.; Belleville; Steved Boat Club, Belleville; Princeton Club of New York; Down Town Club of Newark; and Belleville-Rod-and-Gun Club.

He leaves his wife, Mrs. Edith Chapman Zink, a former member of the Belleville Board of Educa-

tion; two sons, Homer R. of Princeton and Joseph D. of Sea Girt; two daughters, Mrs. Bradford Brown of Hoboken and Mrs. Ward Whitehouse of Lafayette, La., and 12 grandchildren.

## Lowley

(Continued From Page One)

remain ready to meet unforeseen emergencies, emergencies such as fires and public accidents whenever they strike."

The Salvation Army social welfare program knows no race, color or creed barriers.

## Family Service

(Continued From Page One)

work of the local Agency. General members may attend meetings of the Board and also will have the privilege of recommending elections of Trustees at the annual meeting. The Board has determined that there shall be only nominal dues for general members in order to encourage the greatest number to join.

Dr. James Gardin, president of Family Service, informed the Board that he hoped the general membership drive would provide a pool of interested citizens among whom future Trustees could be found in order to carry on this local service.

"The social service work performed by this Agency saves the community thousands of dollars each year in tax monies and this reason alone should attract interest among our citizens," said Gardin. "In addition we are not looking for direct financial aid from individual citizens. This will come when our work is known to more and more of our people."

Family Service, one of the largest recipients of support from the United Fund, provides counseling and assistance to families in distress, provides for the welfare of children, and provides referral service for social service needs of Belleville citizens regardless of race, color, or economic circumstances.

Mrs. Mary Fawcett, executive secretary of Family Counseling Service will act as contact agent for all who wish to become general members of the Agency. She will be assisted by Mrs. Mary Lapham.

Other district leaders elected are Frank Simeone and Dot Biale, Ward One, District 1; William Horgan and Anne Horgan, Two-1; Paul Malague and Mary Mohen, Two-2; John Casuso and Geraldine Rappa, Two-3; Alvin Conkin and Anna Mallick, Two-4; Philip Newsome and Rita Basile, Two-5; the Gilchrist and Carolyn Pohl, Three-1; William Tobin, Three-2; Patsy Parici and Hedda Faust, Three-3; Joseph Mastandrea and Ann Richard, Three-4; Richard Shuford and Theresa Intindola, Three-5; Patrick LaMotte and Mary Senatore, Three-6; Anthony Domenick and Rita Cuba, Four-1; Peter Esposito and Margaret Moro, Four-2; Barton Basile and Mary Basile, Four-3; Ralph Vana and Betty Barr, Four-5.

Republican district leaders are George Rawcliffe, and Mamie Kimble, Ward One, District 1; Harold Brand and Joanne Verian, One-2; Louis Andersen and Lillian Winfield, One-3; Andrew Lukowick and Helen Lukowick, Two-1; Thomas Doyle and Virginia Fessler, Two-2; Frank Bangert

What are the folks doing? Find out fast with a friendly phone call. It costs little. A 3 minute station call clear to Montreal, Canada from Newark costs only 73¢ after 6 PM - 10% tax not included.

DeCamp BUS LINES NEW JERSEY'S FINEST

For Timetable Information Gregory 1-2300 Clifton, N.J.

DeCamp BUS LINES NEW JERSEY'S FINEST

DeCamp BUS LINES NEW JERSEY'S FINEST

DeCamp BUS LINES NEW JERSEY'S FINEST

DeCamp BUS LINES NEW JERSEY'S FINEST

DeCamp BUS LINES NEW JERSEY'S FINEST

DeCamp BUS LINES NEW JERSEY'S FINEST

DeCamp BUS LINES NEW JERSEY'S FINEST

DeCamp BUS LINES NEW JERSEY'S FINEST

DeCamp BUS LINES NEW JERSEY'S FINEST

DeCamp BUS LINES NEW JERSEY'S FINEST

DeCamp BUS LINES NEW JERSEY'S FINEST

DeCamp BUS LINES NEW JERSEY'S FINEST

DeCamp BUS LINES NEW JERSEY'S FINEST

DeCamp BUS LINES NEW JERSEY'S FINEST

DeCamp BUS LINES NEW JERSEY'S FINEST

DeCamp BUS LINES NEW JERSEY'S FINEST

DeCamp BUS LINES NEW JERSEY'S FINEST

DeCamp BUS LINES NEW JERSEY'S FINEST

DeCamp BUS LINES NEW JERSEY'S FINEST

DeCamp BUS LINES NEW JERSEY'S FINEST

DeCamp BUS LINES NEW JERSEY'S FINEST

secretary of Family Counseling Service will act as contact agent for all who wish to become general members of the Agency. She will be assisted by Mrs. Mary Lapham.

## Election

(Continued From Page One)

trict 6. The Wallicks and 136 and 140 votes respectively, and the Gaudios 123 and 125, respectively.

Other district leaders elected are Frank Simeone and Dot Biale, Ward One, District 1; William Horgan and Anne Horgan, Two-1; Paul Malague and Mary Mohen, Two-2; John Casuso and Geraldine Rappa, Two-3; Alvin Conkin and Anna Mallick, Two-4; Philip Newsome and Rita Basile, Two-5; the Gilchrist and Carolyn Pohl, Three-1; William Tobin, Three-2; Patsy Parici and Hedda Faust, Three-3; Joseph Mastandrea and Ann Richard, Three-4; Richard Shuford and Theresa Intindola, Three-5; Patrick LaMotte and Mary Senatore, Three-6; Anthony Domenick and Rita Cuba, Four-1; Peter Esposito and Margaret Moro, Four-2; Barton Basile and Mary Basile, Four-3; Ralph Vana and Betty Barr, Four-5.

Republican district leaders are George Rawcliffe, and Mamie Kimble, Ward One, District 1; Harold Brand and Joanne Verian, One-2; Louis Andersen and Lillian Winfield, One-3; Andrew Lukowick and Helen Lukowick, Two-1; Thomas Doyle and Virginia Fessler, Two-2; Frank Bangert

What are the folks doing? Find out fast with a friendly phone call. It costs little. A 3 minute station call clear to Montreal, Canada from Newark costs only 73¢ after 6 PM - 10% tax not included.

DeCamp BUS LINES NEW JERSEY'S FINEST

DeCamp BUS LINES NEW JERSEY'S FINEST

DeCamp BUS LINES NEW JERSEY'S FINEST

DeCamp BUS LINES NEW JERSEY'S FINEST

DeCamp BUS LINES NEW JERSEY'S FINEST

DeCamp BUS LINES NEW JERSEY'S FINEST

DeCamp BUS LINES NEW JERSEY'S FINEST

DeCamp BUS LINES NEW JERSEY'S FINEST

DeCamp BUS LINES NEW JERSEY'S FINEST

DeCamp BUS LINES NEW JERSEY'S FINEST

DeCamp BUS LINES NEW JERSEY'S FINEST

DeCamp BUS LINES NEW JERSEY'S FINEST

DeCamp BUS LINES NEW JERSEY'S FINEST

DeCamp BUS LINES NEW JERSEY'S FINEST

DeCamp BUS LINES NEW JERSEY'S FINEST

DeCamp BUS LINES NEW JERSEY'S FINEST

DeCamp BUS LINES NEW JERSEY'S FINEST

DeCamp BUS LINES NEW JERSEY'S FINEST

DeCamp BUS LINES NEW JERSEY'S FINEST

DeCamp BUS LINES NEW JERSEY'S FINEST

DeCamp BUS LINES NEW JERSEY'S FINEST

DeCamp BUS LINES NEW JERSEY'S FINEST

DeCamp BUS LINES NEW JERSEY'S FINEST

DeCamp BUS LINES NEW JERSEY'S FINEST

DeCamp BUS LINES NEW JERSEY'S FINEST

DeCamp BUS LINES NEW JERSEY'S FINEST

DeCamp BUS LINES NEW JERSEY'S FINEST

DeCamp BUS LINES NEW JERSEY'S FINEST

DeCamp BUS LINES NEW JERSEY'S FINEST

DeCamp BUS LINES NEW JERSEY'S FINEST

DeCamp BUS LINES NEW JERSEY'S FINEST

and Mary Grace Hannon, Two-3; Wesley Scheegan and Edith Dilco, Two-4; Anthony Dilco and Edith Dilco, Two-5; William Healy and Alice Healy, Two-6; Warren Johnson and May Metz, Three-1; Patrick Thomas and Catherine North, Three-2; Daniel Hyde and Rose Fredericks, Three-3; Alfred Moore and Jessie P. Ruse, Three-4; Russell Eller and Ruth Reynolds, Three-5; Henry Lewis and Roberts Hart, Three-6; Benjamin Maglin and Marie Maglin, Four-1; Anthony Pisci and Ruth Fredericks, Four-2; Casar Geario and Vincenzo Garbone, Four-3; Howard Hogan Theresa Singer, Four-4; Nicholas Korman and Mildred Ross, Four-5; and Rudolph Zeller and Hazel Rether, Four-6.

Other district leaders elected are Frank Simeone and Dot Biale, Ward One, District 1; William Horgan and Anne Horgan, Two-1; Paul Malague and Mary Mohen, Two-2; John Casuso and Geraldine Rappa, Two-3; Alvin Conkin and Anna Mallick, Two-4; Philip Newsome and Rita Basile, Two-5; the Gilchrist and Carolyn Pohl, Three-1; William Tobin, Three-2; Patsy Parici and Hedda Faust, Three-3; Joseph Mastandrea and Ann Richard, Three-4; Richard Shuford and Theresa Intindola, Three-5; Patrick LaMotte and Mary Senatore, Three-6; Anthony Domenick and Rita Cuba, Four-1; Peter Esposito and Margaret Moro, Four-2; Barton Basile and Mary Basile, Four-3; Ralph Vana and Betty Barr, Four-5.

Republican district leaders are George Rawcliffe, and Mamie Kimble, Ward One, District 1; Harold Brand and Joanne Verian, One-2; Louis Andersen and Lillian Winfield, One-3; Andrew Lukowick and Helen Lukowick, Two-1; Thomas Doyle and Virginia Fessler, Two-2; Frank Bangert

What are the folks doing? Find out fast with a friendly phone call. It costs little. A 3 minute station call clear to Montreal, Canada from Newark costs only 73¢ after 6 PM - 10% tax not included.

DeCamp BUS LINES NEW JERSEY'S FINEST

DeCamp BUS LINES NEW JERSEY'S FINEST

DeCamp BUS LINES NEW JERSEY'S FINEST

DeCamp BUS LINES NEW JERSEY'S FINEST

DeCamp BUS LINES NEW JERSEY'S FINEST

DeCamp BUS LINES NEW JERSEY'S FINEST

DeCamp BUS LINES NEW JERSEY'S FINEST

DeCamp BUS LINES NEW JERSEY'S FINEST

DeCamp BUS LINES NEW JERSEY'S FINEST

DeCamp BUS LINES NEW JERSEY'S FINEST

DeCamp BUS LINES NEW JERSEY'S FINEST

DeCamp BUS LINES NEW JERSEY'S FINEST

DeCamp BUS LINES NEW JERSEY'S FINEST

DeCamp BUS LINES NEW JERSEY'S FINEST

DeCamp BUS LINES NEW JERSEY'S FINEST

DeCamp BUS LINES NEW JERSEY'S FINEST

DeCamp BUS LINES NEW JERSEY'S FINEST

DeCamp BUS LINES NEW JERSEY'S FINEST

DeCamp BUS LINES NEW JERSEY'S FINEST

DeCamp BUS LINES NEW JERSEY'S FINEST

DeCamp BUS LINES NEW JERSEY'S FINEST

DeCamp BUS LINES NEW JERSEY'S FINEST

DeCamp BUS LINES NEW JERSEY'S FINEST

DeCamp BUS LINES NEW JERSEY'S FINEST

DeCamp BUS LINES NEW JERSEY'S FINEST

DeCamp BUS LINES NEW JERSEY'S FINEST

DeCamp BUS LINES NEW JERSEY'S FINEST

DeCamp BUS LINES NEW JERSEY'S FINEST

DeCamp BUS LINES NEW JERSEY'S FINEST

DeCamp BUS LINES NEW JERSEY'S FINEST

DeCamp BUS LINES NEW JERSEY'S FINEST

DeCamp BUS LINES NEW JERSEY'S FINEST

DeCamp BUS LINES NEW JERSEY'S FINEST

Mrs. Esther R. Jonas, sister of Mrs. Alfred B. Wolk, 211 Adelaide Street, died Sunday, April 19, after a long illness. Mrs. Jonas, daughter of the late Philip M. Rankin, noted English, Yiddish and Hebrew poet, was a leader and officer in local and national Hare, Three-4; Russell Eller and Ruth Reynolds, Three-5; Henry Lewis and Roberts Hart, Three-6; Benjamin Maglin and Marie Maglin, Four-1; Anthony Pisci and Ruth Fredericks, Four-2; Casar Geario and Vincenzo Garbone, Four-3; Howard Hogan Theresa Singer, Four-4; Nicholas Korman and Mildred Ross, Four-5; and Rudolph Zeller and Hazel Rether, Four-6.

Other district leaders elected are Frank Simeone and Dot Biale, Ward One, District 1; William Horgan and Anne Horgan, Two-1; Paul Malague and Mary Mohen, Two-2; John Casuso and Geraldine Rappa, Two-3; Alvin Conkin and Anna Mallick, Two-4; Philip Newsome and Rita Basile, Two-5; the Gilchrist and Carolyn Pohl, Three-1; William Tobin, Three-2; Patsy Parici and Hedda Faust, Three-3; Joseph Mastandrea and Ann Richard, Three-4; Richard Shuford and Theresa Intindola, Three-5; Patrick LaMotte and Mary Senatore, Three-6; Anthony Domenick and Rita Cuba, Four-1; Peter Esposito and Margaret Moro, Four-2; Barton Basile and Mary Basile, Four-3; Ralph Vana and Betty Barr, Four-5.

Republican district leaders are George Rawcliffe, and Mamie Kimble, Ward One, District 1; Harold Brand and Joanne Verian, One-2; Louis Andersen and Lillian Winfield, One-3; Andrew Lukowick and Helen Lukowick, Two-1; Thomas Doyle and Virginia Fessler, Two-2; Frank Bangert

What are the folks doing? Find out fast with a friendly phone call. It costs little. A 3 minute station call clear to Montreal, Canada from Newark costs only 73¢ after 6 PM - 10% tax not included.

DeCamp BUS LINES NEW JERSEY'S FINEST

DeCamp BUS LINES NEW JERSEY'S FINEST

DeCamp BUS LINES NEW JERSEY'S FINEST

DeCamp BUS LINES NEW JERSEY'S FINEST

DeCamp BUS LINES NEW JERSEY'S FINEST

DeCamp BUS LINES NEW JERSEY'S FINEST

DeCamp BUS LINES NEW JERSEY'S FINEST

DeCamp BUS LINES NEW JERSEY'S FINEST

DeCamp BUS LINES NEW JERSEY'S FINEST

DeCamp BUS LINES NEW JERSEY'S FINEST

DeCamp BUS LINES NEW JERSEY'S FINEST

DeCamp BUS LINES NEW JERSEY'S FINEST

DeCamp BUS LINES NEW JERSEY'S FINEST

DeCamp BUS LINES NEW JERSEY'S FINEST

DeCamp BUS LINES NEW JERSEY'S FINEST

DeCamp BUS LINES NEW JERSEY'S FINEST

DeCamp BUS LINES NEW JERSEY'S FINEST

DeCamp BUS LINES NEW JERSEY'S FINEST

DeCamp BUS LINES NEW JERSEY'S FINEST

DeCamp BUS LINES NEW JERSEY'S FINEST

DeCamp BUS LINES NEW JERSEY'S FINEST

DeCamp BUS LINES NEW JERSEY'S FINEST

DeCamp BUS LINES NEW JERSEY'S FINEST

DeCamp BUS LINES NEW JERSEY'S FINEST

DeCamp BUS LINES NEW JERSEY'S FINEST

DeCamp BUS LINES NEW JERSEY'S FINEST

DeCamp BUS LINES NEW JERSEY'S FINEST

DeCamp BUS LINES NEW JERSEY'S FINEST

DeCamp BUS LINES NEW JERSEY'S FINEST

DeCamp BUS LINES NEW JERSEY'S FINEST

DeCamp BUS LINES NEW JERSEY'S FINEST

DeCamp BUS LINES NEW JERSEY'S FINEST

DeCamp BUS LINES NEW JERSEY'S FINEST



## Gala Evening At Theatre In Round For C. M. Guild

The Clara Maass Memorial Hospital Guild is sponsoring a dinner dance and theatre party at the Meadowbrook Dinner Theatre, Cedar Grove, for tomorrow evening of April 25.

The program includes a full course dinner, a two hour musical comedy performance of Guy's and Dolls, with professional Broadway cast, starring singer Allan Jones, followed by dancing in two open areas.

Until closing tickets for the event are available at Clara Maass Hospital.

Dailey's Meadowbrook now presents an entirely different effect with an overhead tent canopy, raised stage surrounded by tables, and new creative lighting. Each guest will be seated within twelve theatre rows of the stage. Actors exist and entrance through the audience, thereby creating a feeling of audience participation in the shows. After the performance, the stage disappears from the middle of the floor making room available for dancing.

Chairman for the event is Mrs. David Weiner assisted by the following committee: Mrs. Stephen Potter, Chairman of Tickets and Reservations, and Co-Chairmen Mrs. Norman Selt and Mrs. Leo Mattia.

Hostesses for the evening include Mrs. Richard De Capua, Mrs. Albert Oberg, Mrs. Frank Vallaro, Mrs. Joseph E. Gehlison, Publicity chairmen are Mrs. Rachel Gennell and Mrs. Nicholas Carmel; program chairman, Mrs. Leroy Zieker. Mrs. Samuel L. Mena is President of the Group.

### Receives Art Award

Mrs. Victor Schleicher, of 305 Union Street, is the recipient of the Ann E. Waldron Memorial Award of the American Artists Association. The award was made at the Grand National Exhibition, National Art Gallery, New York, for her well executed painting entitled "The Harvest". The exhibition will continue through April 26 from 1 to 6 p.m. daily.

### 130 Members, Holy Name K of C Donated Blood

130 members of St. Peter's Holy Name K of C of Belleville K of C donated blood on April 17, in the new K of C building, at 94 Bridge Street, where the Essex County Bloodmobile and the Belleville Red Cross Volunteers conducted a blood bank. This large registration should insure a blood supply sufficient supply of blood for some time to come.

Members of the committee who have attained these results are Eugene Barnett, Ed. Mahler, John Andrews, John Cahill, Al T. Caragher, Russ Gaffney, Ed DeMartino, Ken Dwyer, George Mahler, John Corrihan, Jim Brady, Paul Hannan.

Joe Gilroy, Gerry Nadeau, Dick Fantin, Jim Messio, Jack Bickerman, Frank Weiss, Ed Fitzgerald, John Diamond, Robert Wetzy, George Lynch, Jim McCormick, Tom McManus, Tony Tartaglia, Tom McManus, Fred Szwedski, Fred Scherman, Fred Petrosino, John Ryan, Rudy Zoeller.

### Holy Name Breakfast

The Holy Name Society of St. Peter's Church will hold its 35th annual Communion Breakfast on April 26, at the Ede's Hall, Washington Avenue and Van Hook Place. The affair will conclude a week long devotion held at the church. Tickets will be available at the mission. All men are invited to attend.

## Local Man Weds Miss Winegar



Mrs. John A. B. Greulich, 111

St. Mary's R. C. Church, Rutherford, was the scene April 4, of the marriage of Miss Jeanette Winegar, daughter of Mr. and Mrs. William C. Winegar, of Rutherford, to John A. B. Greulich, III, son of Mr. and Mrs. Greulich, of 349 Stephen Street, Rev. Thomas J. Walsh performed the ceremony which was followed by a reception at the Arlington Play-ers Club.

Especially by her father, the bride wore pure silk tulle, trimmed with lace and seed pearls, fashioned with an Empire waist and chapel train. A pointed crown of seed pearls held her veil. She carried white orchids on a prayer book.

Mrs. Louis Phillips, sister of the bride, was matron of honor. Bridesmaids included Mrs. Robert Laasch, the bridesmaid, and Miss Brenda Ryan. Mrs. Phillips wore a floor length gown of aqua organza. The bridesmaids wore similarly styled in blue organza. They carried old fashioned bouquets of roses and pom-poms.

Alvin J. Greulich served as his brother's best man. Dr. Phillips and Alfred Shon ushered.

Mrs. Greulich, a graduate of St. Mary's High School, Rutherford and Jersey City Medical Center School of Nursing, is on the Pediatric Staff of that Hospital. Her husband, an alumnus of Belleville High School, served in the US Navy, aboard the USS Hymen, for four years. He is presently with JEM Manufacturing Co., Kearny.

After a Pocono Mountain honeymoon, they will reside in Arlington.

### David Alan Faust

A son, David Alan, was born to Mr. and Mrs. Stan Faust, of Hamilton, Long Island, formerly of Belleville. Before her marriage, Mrs. Faust was Miss Mona Hazen, of Brooklyn.

The paternal grandparents are Mr. and Mrs. Jack Faust, of 293 Gresham Parkway.

### Chosen For Honor Groups

Miss Susan Walsh of 7 Branch Brook Drive is one of four Caldwell College seniors named candidates to two national graduate honor societies. The daughter of Mr. and Mrs. Henry P. Walsh, Susan is a graduate of Belleville High School, where she was an honor student. At Caldwell she is a member of the top tenth of her class of 40. She is also prefect of the Sodality, a part editor of the yearbook, and a member of the philosophy honor society, Ergo.



Mrs. Bernard A. Kannen

## Miss Marilyn Ackerman Bride Of Belmar Attorney

Rabbi Cohen Unites Belleville Teacher And Rutgers Grad In Colorful Ceremony On Monday

Miss Marilyn Joan Ackerman, daughter of Mr. and Mrs. Edward J. Ackerman, of 43 Lloyd Place, became the bride, on April 20, of Bernard A. Kannen, son of Mr. and Mrs. Alfred Kaminsky, of Belmar. Rabbi Victor Cohen, of Congregation Ahavath Achim, performed the ceremony at the Alpine, Maplewood, where a reception followed.

The bride, escorted by her father, wore white peau de soie appliqued with lace, fashioned with a fitted bodice and full skirt which ended in a chapel train. A veil of tulle was attached to a crown of seed pearls. She carried a cascade bouquet of carnations, stephanotis and baby's joy.

Miss Harriet Ackerman was her sister's honor attendant. She was dressed in white embroidered organza over pink tulle, with pink accessories. Miss Barbara Solomon, cousin of the bride, wore pink organza with matching accessories and both carried white gladioli with pink carnations.

Gerald Michelson served as best man. Ushers were Arthur Blumner, Joseph Fishman, Martin Glassman, Shalom Sachs, Alvin Stutz, Aaron Temkin, and Mark Temkin.

Mrs. Kannen, an alumna of Montclair State College, where she will receive a Master of Arts degree in June, attended Laval University in Quebec, the Ecole Normale d'Instituteurs and the University of Bordeaux in France. She is a member of the faculty of Wayne Township High School.

Mr. Kannen, a graduate of Rutgers University, where he was a member of Zeta Beta Tau fraternity, is an alumnus of the University of Michigan School of Law. He served as a lieutenant in the infantry in Korea, and is a counselor at law practicing in Sanbury Park.

## Betrothed



Miss Grace Yellowki

Mr. and Mrs. Joseph E. Yodowski, of North Arlington, announce the engagement of their daughter, Grace Blair, to John J. Ramakowsky, son of Mr. and Mrs. Ramakowsky, of 291 Main Street.

The bride elect, a graduate of North Arlington High School, is employed by the Hartford Accident and Indemnity Co. Her fiancé, an alumnus of Belleville High School, is now aboard the Destroyer USS Purdy.

## Is Bride Elect

Announcement has been made of the engagement of Miss Patricia Ann Agnew, daughter of Mr. and Mrs. Donald F. Agnew, of Cranford, to John Anthony Friel, son of Mr. and Mrs. John F. Friel, of 118 Adelaide Street.

Miss Agnew, a graduate of Guyard-Mercy Junior College, is employed as a chief laboratory technician at East Orange General Hospital. Her fiancé, an alumnus of Stevens Institute of Technology, is a development engineer with Linde Company.

A winter wedding is planned.

## In Clara Maass Hospital

Mrs. Ernest Koehn, of 151 Cedar Hill Avenue, is convalescing in Clara Maass Hospital after an illness.

## Girl Scout News

### Scout Head At Confab

Mrs. A. H. Verhaegh, President of the Girl Scout Council of Belleville, has returned from a Presidential Meeting held at Buck Hills, Pa. Sessions with Regional Committee were held to discuss problem and projects in scouting.

124 Councils will send 10,000 senior scouts to a "Roundup" to be held near Pike's Peak, Colorado. Possible changes in local charters was also up for discussion. An Caravan, from October 5 through December 15, is planned. Belleville plans to send scouts to this workshop. One out of every four girls of Brownie age, are Brownies today; one in six are intermediates and one in 48, are Girls.

Girl Scouts of Troops 9 & 19 are working on Producer and "Jager Badges and have seen in "eering Broadway and T. V. Lou Bedarbis, leader of the badge group; Janet Borino, Linda Le-moine, Barbara Regula, Barbara Nagata, Betty Lou Han, Angela Macaluso, Ann Marie Nasso, Sandra Ciccarelli.

### St. Lucy Filippini Sodality

Plans Day Of Recollection

St. Lucy Filippini Sodality, of Holy Family Church, will have a Day of Recollection on Sunday afternoon from 3 until 6 p.m. at Holy Family Church. A buffet supper will follow. Members will receive Holy Communion at the 3:15 a.m. Mass.

Rev. Salvatore Malanga is in charge, assisted by Mrs. Anna Landre.

The Sodality will meet Wednesday evening at 8 o'clock in the CYO building. A short travel film will be shown after the business meeting.

Plans will be made for a showing of old bridal gowns at the next meeting, Mrs. Peter Porcaro is, in charge of Wednesday's program. Refreshments will be served by Mrs. Albert Dura and her committee.

The Continental Navy made its first capture of an enemy ship April 4, 1776.

## Four Students

### Get Scholarships

Four Belleville High School students are recipients of scholarships. Miss Lois Haden, daughter of Mr. and Mrs. John Haden, of 44 Branch Brook Drive, a senior, has been awarded a State University scholarship by Loyola College. She is active in the Twirling Club, Chorus Club, Girls Volleyball and Basketball, Junior Class Staff, Junior Red Cross and Girls' Leaders Club.

Thomas Senior, son of Mr. Frank Senior, of 28 DeWitt Avenue, in his senior year, has received a State University scholarship from Rutgers. Senior also a principal candidate for appointment to the senior class in the upper tenth of his class. His activities are: National Honor Society, Golf Team Captain, Senior Senate and is the school reporter to the Belleville Times-News.

Paul C. Tutachek, son of Mr. and Mrs. Franklin Tutachek, of 126 Carpenter Street, is also a winner of a Rutgers University scholarship. Among the up-coming seniors, the senior per ten in his class, the senior has participated in the International Relations Club, Captain of Cross Country Team, Vice President of the National Honor Society and J.V. Basketball.

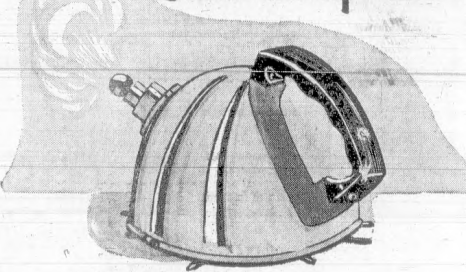
Michael Morano, of 51 Van Reyper Place, has received a scholarship from Albright College. The student, who has obtained a "B" average for four years at the local high school, has participated in Varsity Football and Basketball, President of the Student Council, J.V. Basketball and Sports Club.

### CYO Crusade April 25

CYO members from St. Peter's Church, will take part in the Essex County CYO Holy Communion Crusade during the week starting April 25. The crusade is the group's principal spiritual activity this year and will close with a youth rally in honor of the Blessed Mother in May.

Beginning on the same day the CYO's touring Pilgrim Statue of Our Lady of Fatima will be at the church for a week. Parishes which are host to the statue usually schedule special devotion during the week.

## Does Your Money Just Evaporate



No more wondering where your money goes when you pay your bills with Peoples National Bank & Trust Company checks. Your check stubs provide an accurate budget control. No matter what your needs, Peoples National Bank & Trust Company has a checking account plan for you.

STOP IN TODAY.



PEOPLES NATIONAL BANK AND TRUST COMPANY

237 WASHINGTON AVENUE



Parking for Customers Adjacent to Bank Building

BELLEVILLE

NEW JERSEY

Member Federal Deposit Insurance Corporation

## NEW PHONE BOOK

for Newark & Vicinity

now going to press!

If you want any change in your present listing in the Telephone Directory...

If you want an extra listing in a directory of a nearby area for yourself, or someone else in your home or business...

Please get in touch with your Telephone Business Office as soon as possible.

P. S. TO BUSINESSMEN—The Classified Directory (Yellow Pages) also closes soon. Make sure your advertisement is in this "Where-to-buy" section. NEW JERSEY BELL



Cut This Ad Out And ... SAVE!

## SPRING SPECIAL

### COOLING SYSTEM

Flush cooling system  
Tighten hose connections  
Replace necessary hose  
Check water pump  
Adjust fan belt  
Examine for proper thermostat  
Install rust inhibitor in radiator

### MOTOR TUNE-UP

Clean & adjust spark plugs  
Clean & adjust distributor points  
Set ignition timing  
Adjust carburetor  
Tighten cylinder head  
Tighten electrical connections  
Clean air filters  
Check generator charging

\$18.95

V-8 Labor Only

With This Ad.

### LUBRICATION

Lubricate entire chassis  
Change oil to proper grade Pennzoil (Z-7)  
Test & fill battery  
Clean battery terminals  
Check & fill transmission  
Lubricate hinges  
Lubricate door locks

\$15.95

6 Cyl. Labor Only

With This Ad.

### SAFETY CHECK

Examine front wheel bearings  
Examine brake linings & report  
Adjust brakes  
Adjust steering gear  
Check lights-Aim lights-Check wipers  
Check horn-Check Tires

See Otto M. Sgobbo - Service Manager

## LEARNARD CHEVROLET

514 WASHINGTON AVENUE

BELLEVILLE, N. J. - PL 9-4200

Tubeless Tire Headquarters - See us for all your needs

All Parts & Lubricants are extra

### Lumber

Open Sunday

From 9 A.M.

Until 1 P.M.

BELLEVILLE

Building Materials

Corp.

Easy To Reach and Park

LUMBER

• ROCKLATH • PLYWOOD

• SHEET ROCK • CEILING

TILE • KNOTTY PINE

• MASONITE • SHELVING

• SHINGLES

• FLOORING • CEDAR

LINING • MOLDING • INSULATION • DOORS.

Sand Cement

PLYmouth

9-5818

528 Joralemon St. Belleville

OPEN 8-5 MON. THRU SAT.

WHEELING

80¢

• 25¢ off on all items •

• 25¢ off on all items •

• 25¢ off on all items •

• 25¢ off on all items •

• 25¢ off on all items •

• 25¢ off on all items •

• 25¢ off on all items •

• 25¢ off on all items •

• 25¢ off on all items •

• 25¢ off on all items •







# SPOTLIGHT ON SPORTS

By FRANK JONES

Twenty-six grammar school baseball teams will take the field for the 19th consecutive year tomorrow as the Essex County CYO Grammar School Baseball League opens its 1959 season. St. Thomas the Apostle of Bloomfield will be defending the title it won last year for the first time. The teams will be divided into four divisions with games planned on Wednesday on Mondays, Wednesday and Fridays. Divisional champs will then take part in the playoffs leading to the County crown.

Last week we confidently bucked the mainstream of major league forecasting and predicted that this was the year for the pennant-starved Pirates and Tigers to finally dash in the 1959 World Series. Then we sat snugly back and waited for our picks to begin their successful campaign toward their respective pennants. To our horror, after a week had gone by, the standings showed our pennant hopefuls reclining peacefully in the cellar with neither one of them having won a game. Now we ask you, is this just? Is this a desperate plea for help to the Braves and the (ugh) Yankees would not again make a shambles of their respective leagues. No wonder conformity reigns in our society. Yet, undaunted, we will stick by our prophecy; we will not be intimidated by early reverses. We will continue to support our pennant choices and let the chips fall where they may.

Congratulations are in order to Jane Cuzzo and Bonnie Cook for their performances in winning the intermediate and junior girls' fencing championship respectively. The Recreation Department, under the supervision of Bob Cook, is also to be commended for organizing this unique civic activity to such a degree as it presently stands in Belleville.

Two major baseball activities are slated to begin soon in Belleville. Within the next few days we expect to see the season's first game for the Little League and the American Legion Junior Baseball team. This will be the first year that the local Legion post will sponsor a squad in the County League.

## Risoli, Lucy Prioli Tops

The Padula Association is out in front in the Recreation Department's Girls Junior Bowling League, with 13 wins to their credit.

The Jolly Cleaners are in second place with 12 wins, third place is a tie, Mascara Music and Belleville Pet Shop, each with nine wins.

In the Boys division the Sullivan Association leads with 17 wins. The Albany are second and place with 15 wins with Branch Brook Lanes close behind with 14 wins.

Jimmy Rioli held the high average of 153. John Rioli, 160 and Jimmy Hartwick, 122. The individual high single game of 192 was rolled by Charlie Shapiro.

Lucille Prioli has a high game of 160 and high average of 122. Marsala Focini is second with high average of 117. Bonnie Cook is third with high average of 112.

BOYS			
Team	W	L	
Sullivan	17	3	
Albany	15	6	
Branch Brook Lanes	14	7	
Yankees	12	9	
Eagles	11	10	
Specs	9	11	
Latteras Drugs	0	21	
GIRLS			
Team	W	L	
Padula	13	2	
Jollys	11	4	
Mascara	9	6	
Belleville Pet Shop	9	6	
Perkettes	5	10	
Belleville Rosary	4	11	
Belle-Maid	3	12	
All Sports	0	15	

## ST. ANTHONY'S IN FINAL TRY FOR CYO TITLE

To Play St. Casimir's Of Newark In Final Series; Must Sweep To Stay Alive

St. Anthony's 1, after a double win over Immaculate Heart of Mary 2, Maplewood, still has a chance of leading St. Casimir's Newark, for the Essex County Senior CYO Mixed Bowling League championship.

St. Casimir's is the defending champion and has a three game edge over St. Anthony's but must play the Belleville squad on Sunday as the season ends. A seven game series would force a playoff.

St. Anthony's toppled Immaculate Heart of Mary, 701-684 and 730-720, in the first and last games on Sunday, losing the middle game, 692-655. Ralph Casella, opening 302 was the top game for the locals.

St. Anthony's 2, meanwhile, was losing twice to St. Casimir's but its lone victory kept the New Yorkers from being the title right away. The 2-2 defeat kept the No. 1 club alive by winning the last game, 711-675, as John Cifarella rolled 368.

# Garfield Hands Belleville Fourth Straight Loss 3-2

Coach Berlinski's Boys Drop Games To Bloomfield 7-2 And Garfield 3-2; Commit Total Of Five Errors In Garfield Game

Belleville High's varsity nine dropped two games this week, one to Bloomfield, 7-2, and the other to Garfield 3-2. The team gave the win to Garfield as they committed five errors, four of which were in all of Garfield's scoring.

The Bloomfield game saw Belleville give away several runs in again giving little support to Coach Berlinski's ace hurler, Jim Datoli. The Bellboys committed three errors, two of which were involved in scoring innings.

Belleville opened the scoring in the bottom half of the second inning when leftfielder Mike Monano led off with a booming triple to left that carried some 390 feet. Then Datoli brought Monano home with a sacrifice fly to deep left.

Bloomfield retaliated with three runs in the fifth inning when leftfielder Steve Smith went to second on Mickey Lepore's base knock, and both advanced on wild pitch. Charlie DeWitt then knocked in two runs with a bunt hit, and he took second on the throw. At infield out second and DeWitt and he scored when Barry Elson struck out and the catcher dropped the ball.

In the sixth the Bellboys made it 5-1 when Charlie DeWitt walked, stole second, and went to third on a single by Fred Laudati. Laudati was then caught in a rundown between first and second, and the Bellboys abandoned the attempt. Single by Lepore and DeWitt enabled Laudati to score, and only a line throw by Don DeWitt prevented another Bell run.

The Bellboys got one run back in the eighth inning as George Vialle walked, DeWitt scored, and Monano was intentionally walked to load the bases. Then Vialle was out at the plate on a grounder by Datoli, but DeWitt scored when the catcher caught the throw first on a double play attempt.

Bloomfield put the game out of reach in the ninth as they scored two off runs on two hits. DeWitt walked, stole second, and went to third on Dan Heib's single, and scored on the same play as poor infield judgment on Belleville's part let the run in and Heib got to second. Heib then stole third and scored the final run on a sacrifice fly.

The Garfield game saw the Bellboys play the part of Santa Claus as they committed five errors, which enabled Garfield to score three unearned runs. Datoli was coasting on a one-hitter going into the last of the seventh with a 2-1 lead, but it took Garfield just three batters to win the game as they tallied two runs on one base hit and three Belleville miscues.

Warren Miller finished up with the season's 125th average of 153. The high game of the year was rolled by Roy Dahlquist, a 266. Herman Horman had the high series score of 610.

The Busters were high in both team game and team series as they chalked up scores of 929 and 529 during the season. They also ended with the high team average of 127.

In their final games the Cub won a pair from the Muffins to gain third place ahead of the Hilltoppers, and the Snappers took two from the Farmers. Bill Kelly's 224 and Warren Miller's 211 were high for the week.

Final Standings			
Oldtimers	W	L	Avg.
Busters	48½	35½	797
Cubs	44	40	687
Hilltoppers	42½	41½	748
Muffins	42½	41½	738
Snappers	41	43	732
Aces	40½	43½	740
Farmers	27	57	687

## ENTRY BLANKS NOW AVAILABLE FOR TRACK MEET

May 5 Deadline Announced For St. Peter's CYO Track And Field Meet May 23

Entry blanks will be delivered to all the grammar schools in Belleville Monday for the ninth annual track and field day sponsored by St. Peter's CYO at the Belleville Stadium on Saturday, May 23.

Boys and girls from the fourth to the eighth grades are eligible to compete in the various events. It is urgent that the entry blanks be returned to the respective principals as soon as possible, the deadline for entries being Tuesday, May 5.

The boys and girls will compete in the following events, according to their weight: 50 yd. dash to boys and girls, button race for girls only, boys' 100 yd. dash, 200 yd. dash, 400 yd. dash, 800 yd. dash, 1600 yd. dash, 3200 yd. dash, 6400 yd. dash, 12800 yd. dash, 25600 yd. dash, 51200 yd. dash, 102400 yd. dash, 204800 yd. dash, 409600 yd. dash, 819200 yd. dash, 1638400 yd. dash, 3276800 yd. dash, 6553600 yd. dash, 13107200 yd. dash, 26214400 yd. dash, 52428800 yd. dash, 104857600 yd. dash, 209715200 yd. dash, 419430400 yd. dash, 838860800 yd. dash, 1677721600 yd. dash, 3355443200 yd. dash, 6710886400 yd. dash, 13421772800 yd. dash, 26843545600 yd. dash, 53687091200 yd. dash, 107374182400 yd. dash, 214748364800 yd. dash, 429496729600 yd. dash, 858993459200 yd. dash, 1717986918400 yd. dash, 3435973836800 yd. dash, 6871947673600 yd. dash, 13743895347200 yd. dash, 27487790694400 yd. dash, 54975581388800 yd. dash, 109951162777600 yd. dash, 219902325555200 yd. dash, 439804651110400 yd. dash, 879609302220800 yd. dash, 1759218604441600 yd. dash, 3518437208883200 yd. dash, 7036874417766400 yd. dash, 14073748835532800 yd. dash, 28147497671065600 yd. dash, 56294995342131200 yd. dash, 112589990684262400 yd. dash, 225179981368524800 yd. dash, 450359962737049600 yd. dash, 900719925474099200 yd. dash, 1801439850948198400 yd. dash, 3602879701896396800 yd. dash, 7205759403792793600 yd. dash, 14411518807585587200 yd. dash, 28823037615171174400 yd. dash, 57646075230342348800 yd. dash, 115292150460684697600 yd. dash, 230584300921369395200 yd. dash, 461168601842738790400 yd. dash, 922337203685477580800 yd. dash, 1844674407370955161600 yd. dash, 3689348814741910323200 yd. dash, 7378697629483820646400 yd. dash, 14757395258967641292800 yd. dash, 29514790517935282585600 yd. dash, 59029581035870565171200 yd. dash, 118059162071741130342400 yd. dash, 236118324143482260684800 yd. dash, 472236648286964521369600 yd. dash, 944473296573929042739200 yd. dash, 1888946593147858085478400 yd. dash, 3777893186295716170956800 yd. dash, 7555786372591432341913600 yd. dash, 15111572745182864683827200 yd. dash, 30223145490365729367654400 yd. dash, 60446290980731458735308800 yd. dash, 120892581961462917470617600 yd. dash, 241785163922925834941235200 yd. dash, 483570327845851669882470400 yd. dash, 967140655691703339764940800 yd. dash, 1934281311383406679529881600 yd. dash, 3868562622766813359059763200 yd. dash, 7737125245533626718119526400 yd. dash, 15474250491067253436239052800 yd. dash, 30948500982134506872478105600 yd. dash, 61897001964269013744956211200 yd. dash, 123794003928538027489912422400 yd. dash, 247588007857076054979824844800 yd. dash, 495176015714152109959649689600 yd. dash, 990352031428304219919299379200 yd. dash, 1980704062856608439838598758400 yd. dash, 3961408125713216879677197516800 yd. dash, 7922816251426433759354395033600 yd. dash, 15845632502852867518708790067200 yd. dash, 31691265005705735037417580134400 yd. dash, 63382530011411470074835160268800 yd. dash, 126765060022822940149670320537600 yd. dash, 253530120045645880299340641075200 yd. dash, 507060240091291760598681282150400 yd. dash, 1014120480182583521197362564300800 yd. dash, 2028240960365167042394725128601600 yd. dash, 4056481920730334084789450257203200 yd. dash, 8112963841460668169578900514406400 yd. dash, 16225927682921336339157801028812800 yd. dash, 32451855365842672678315602057625600 yd. dash, 64903710731685345356631204115251200 yd. dash, 129807421463370690713262408230502400 yd. dash, 259614842926741381426524816461004800 yd. dash, 519229685853482762853049632922009600 yd. dash, 1038459371706965525706099265844019200 yd. dash, 2076918743413931051412198531688038400 yd. dash, 4153837486827862102824397063376076800 yd. dash, 8307674973655724205648794126752153600 yd. dash, 16615349947311448411297588253504307200 yd. dash, 33230699894622896822595176507008614400 yd. dash, 66461399789245793645190353014017228800 yd. dash, 132922799578491587290380706028034457600 yd. dash, 265845599156983174580761412056068915200 yd. dash, 531691198313966349161522824112137830400 yd. dash, 1063382396627932698323045648224275660800 yd. dash, 2126764793255865396646091296448551321600 yd. dash, 4253529586511730793292182592897102643200 yd. dash, 8507059173023461586584365185794205286400 yd. dash, 17014118346046923173168730371588410572800 yd. dash, 34028236692093846346337460743176821145600 yd. dash, 68056473384187692692674921486353642291200 yd. dash, 136112946768375385385349842972707284582400 yd. dash, 272225893536750770770699685945414569164800 yd. dash, 544451787073501541541399371890829138329600 yd. dash, 1088903574147003083082798743781658276659200 yd. dash, 2177807148294006166165597487563316553318400 yd. dash, 4355614296588012332331194975126633106676800 yd. dash, 8711228593176024664662389950253266213353600 yd. dash, 17422457186352049329324779900506532426707200 yd. dash, 34844914372704098658649559801013064853414400 yd. dash, 69689828745408197317299119602026129706828800 yd. dash, 139379657490816394634598239204052259413657600 yd. dash, 278759314981632789269196478408104518827315200 yd. dash, 557518629963265578538392956816209037654630400 yd. dash, 1115037259926531157076785913632418075309260800 yd. dash, 2230074519853062314153571827264836150618521600 yd. dash, 4460149039706124628307143654529672301237043200 yd. dash, 8920298079412249256614287309059344602474086400 yd. dash, 17840596158824498513228574618118689204948172800 yd. dash, 35681192317648997026457149236237378409896355200 yd. dash, 71362384635297994052914298472474756819792710400 yd. dash, 142724769270595988105828596944949513639585420800 yd. dash, 285449538541191976211657193889899027279170841600 yd. dash, 570899077082383952423314387779798054558341683200 yd. dash, 1141798154164767904846628775559596109116683366400 yd. dash, 2283596308329535809693257551119192218233366732800 yd. dash, 4567192616659071619386515102238384436466733465600 yd. dash, 9134385233318143238773030204476768872933466931200 yd. dash, 18268770466636286477546060408953537745866933862400 yd. dash, 36537540933272572955092120817907075491733867724800 yd. dash, 73075081866545145910184241635814150983467735449600 yd. dash, 146150163733090291820368483271628301966935470899200 yd. dash, 292300327466180583640736966543256603933870941798400 yd. dash, 584600654932361167281473933086513207867741883596800 yd. dash, 1169201309864722334562947866173026415735483767193600 yd. dash, 2338402619729444669125895732346052831470967534387200 yd. dash, 4676805239458889338251791464692105662941935068774400 yd. dash, 9353610478917778676503582929384211325883870137548800 yd. dash, 18707220957835557353007165858768422651767740275097600 yd. dash, 37414441915671114706014331717536845303535480550195200 yd. dash, 74828883831342229412028663435073690607070961100390400 yd. dash, 149657767662684458824057326870147381214141922200780800 yd. dash, 299315535325368917648114653740294762428283844401561600 yd. dash, 598631070650737835296229307480589524856567688803123200 yd. dash, 1197262141301475670592458614961179049713135777606246400 yd. dash, 2394524282602951341184917229922358099426271555212492800 yd. dash, 478904856520590268236983445984471619885254311042497600 yd. dash, 957809713041180536473966891968943239770508622084995200 yd. dash, 1915619426082361072947933783937886479541017244169990400 yd. dash, 3831238852164722145895867567875772959082034488339980800 yd. dash, 7662477704329444291791735135751545918164068976679961600 yd. dash, 15324955408658888583583470271503091836328137953359923200 yd. dash, 30649910817317777167166940543006183676656275906719846400 yd. dash, 612998216346355543343338810860123673533125518134396800 yd. dash, 1225996432692711086686677621720247347066251036268793600 yd. dash, 2451992865385422173373355243440494694132502072537587200 yd. dash, 4903985730770844346746710486880989388265004145075174400 yd. dash, 9807971461541688693493420973761978776530008290150348800 yd. dash, 19615942923083377386986841947523957553060016580300697600 yd. dash, 39231885846166754773973683895047915106120031600601395200 yd. dash, 7846377169233350954794736779009583021224006321320278400 yd. dash, 15692754338466701909589473558019166042448012642640556800 yd. dash, 31385508676933403819178947116038332084896025285281113600 yd. dash, 62771017353866807638357894232076664169792050570562227200 yd. dash, 125542034707733615276715788464153328339584101141124444800 yd. dash, 251084069415467230553431576928306656679168202282248889600 yd. dash, 502168138830934461106863153856613313358336404564497779200 yd. dash, 1004336277661868922213726307713226267166672809128995558400 yd. dash, 2008672555323737844427452615426452534333345618257991116800 yd. dash, 4017345110647475688854905230852905068666691236515982233600 yd. dash, 8034690221294951377709810461705810137333382473031964467200 yd. dash, 1606938044258990275541962092341162027466676494606392934400 yd. dash, 3213876088517980551083924184682324054933352989212785868800 yd. dash, 6427752177035961102167848369364648109866705978425571737600 yd. dash, 12855504354071922204335696738729296219733411956851143475200 yd. dash, 25711008708143844408671393477458592439466823913702286950400 yd. dash, 51422017416287688817342786954917188933336827827404573900800 yd. dash, 102844034832575377634685573909834377886667655654809147801600 yd. dash, 205688069665150755269371147819667557733335311309618295603200 yd. dash, 411376139330301510538742295639335115466670622619236591206400 yd. dash, 822752278660603021077484591278670230933341245238473182412800 yd. dash, 164550455732120604215496918255734046186668249047694636425600 yd. dash, 329100911464241208430993836511468092373336498095389272851200 yd. dash, 658201822928482416861987673022936184746672996190778545702400 yd. dash, 131640364585696483372397534604587236949334599238155749104800 yd. dash, 263280729171392966744795069209174473898669198476311498169600 yd. dash, 52656145834278593348959013841834894779733839695



**Times Classified Advertisements**  
**To Sell, Buy or Trade Telephone Plymouth 9-3200**  
 Ads May Be Inserted At The Belleville-Times News Office  
 328 Washington Avenue, Or Call  
 PL 9-3200 Up to 5 P.M. on Wednesday  
 \$1.25 for One Week; \$2.50 for Three Weeks;  
 for Twenty-five Words or Less

### Agriculture

**SCREENED TOP SOIL—FILL**  
 excavating, landscaping, sodding  
 land clearing. Let us solve your  
 your drainage problem. Small  
 farms and truck rentals. Ar-  
 mando Vaccaro. Telephone Ply-  
 mouth 9-6640. 3-7-58 TF

**SCREENED TOP SOIL—FILL**  
 Excavating, landscaping, sodding  
 land clearing. Let us solve your  
 drainage problem. Trencher, Bul-  
 loader and truck rentals. Armando  
 Vaccaro. Telephone Plymouth 9-  
 6640. 3-7-58 TF

### Cabinet Makers

**CABINET MAKING. Residential**  
 work. Kitchens, cabinets, furni-  
 ture, remodeling and refinishing.  
 Jammell & Son's Woodworking  
 Co., 12-15 Berton Place, Belleville.  
 Telephone Plymouth 9-5655. 5-8

### Carpenters & Builders

**C. SALES, 36 Baldwin Place,**  
 Belleville. Porch enclosures,  
 recreation rooms, kitchen remodel-  
 ing, garages and general repairs.  
 Small job a specialty. Telephone  
 Plymouth 9-2416. 5-8 TF

**PLASTERING & PATCHING.**  
 Cement work. No job too small.  
 40 yrs. experience. J. Zeis—  
 telephone Plymouth 9-7243. 3-  
 7-58 TF

**FRANK DAIC**  
**MASON CONTRACTOR**  
 A complete line of mason work.  
 Brick Stoops, patios, etc. All  
 work guaranteed. 430  
 Joralemon St. Belleville.  
 PL 9-9532. 4-15-58 TF

### Decorators & Painters

**PAINTING, PAPERHANGING—**  
 Done Economically. 117 Garden  
 Avenue, Belleville. Call Plymouth  
 9-1164 for estimate. 11-5-57 TF

**EWALD TORNBERG, INC.**  
**PAINTING & DECORATING**  
 of the best materials.  
 We give quality and service  
 to Jerome Ave. Belleville, N.J.  
 Plymouth 9-1256. 2-7-58 TF

### Electricians

**ELECTRICAL SERVICE. Prompt**  
 and reasonable. Outlets, lights,  
 switches installed. Wiring for air  
 conditioning. Call Cole, Ply-  
 mouth 9-7581 or Plymouth 9-  
 5880. 3-15-57 U

**CALL US FOR PROMPT AND**  
 complete electrical service.  
 D. Electric, 39 Ralph Street,  
 Belleville. Telephone Plymouth  
 9-1800 and Plymouth 1-2782. TF

**IF IT'S ELECTRICAL CALL**  
**HALEY BROS.** Power, light  
 and house wiring. Plymouth 9-  
 1850, 30 Washington Avenue,  
 Belleville. TF

**LIVE BETTER ELECTRICALLY**  
 with full housepower. For free  
 estimate phone Layton's Electric  
 Service, 658 Belleville Avenue,  
 Belleville, 24 hour Answering  
 Service. Plymouth 9-9262. 8-2-57 TF

**ELECTRICIAN FOR THE**  
**HOME**—lighting, wiring, main-  
 tenance. Patrick J. Ryan—tele-  
 phone Plymouth 1-1134. 4-18-58 TF

**JOHN A. CROCE, LICENSED**  
**ELECTRICIAN**, for industrial,  
 commercial and residence wiring.  
 58 Rutgers Street, Belleville.  
 Telephone Plymouth 9-6182. TF

### For Rent

**CHEERFUL TWO WINDOW**  
**FURNISHED** hall room, bath,  
 in private residence. Gentleman  
 preferred and references. Call af-  
 ter 8:30 P.M. Telephone Plymouth  
 9-0813. 5-8

**AFRICAN VIOLETS**, blooming  
 size, 50 cents to \$1.50. Doris  
 African Violet Corner, 303  
 Franklin Street, Bloomfield, N.J.  
 Telephone PL 9-5455. Open  
 Sunday to 5 P.M. 3-15-57 TF

**FRESH KILLED CHICKENS**,  
 also fresh eggs. D'Angelo Poul-  
 try, 122 Franklin Street,  
 Belleville. Telephone Plymouth  
 9-2080. Free delivery. 6-29

**THRIFT SHOP 150 Little Street.**  
 Half price sale. Open Monday  
 evening and Tuesday. Closed Wed-  
 nesday and Thursday. This week  
 only.

**ORIENTAL RUG, GULISTAN,**  
 7½ by 10½ \$40.00, and En-  
 terbed rug 12 by 36½ white,  
 modern porcelain \$35.00. Telephone  
 Plymouth 1-0377. 5-8

**STUDEBAKER COMMANDER**  
 V-8, 1932. Good condition. Tele-  
 phone 9-7588 after 5 P.M.

**MODERN EXTENSION DINING**  
**ROOM TABLE**, four matching  
 chairs (optional), dressing table  
 with mirror, cabinet radio with  
 short wave attachment, two metal  
 stormdoors. Best offer. Telephone  
 Plymouth 9-4099. 5-8

**CALORIC 4 BURNER AUTO-**  
**MATIC** gas stove. Rotisserie  
 Telephone Plymouth 9-6895. 5-8

**GAS RANGE**, practically new.  
 Telephone Plymouth 1-040 after  
 5:30 P.M.

**G.E. REFRIGERATOR**. Good con-  
 dition, reasonable. Telephone  
 Plymouth 9-1590. 5-8

### For Sale - Real Estate

**BUSINESS LOT 62½' FRONT**  
 by 150' deep. Located 500' from  
 Nantuxy center on Franklin Ave-  
 nue. Asking \$15,000. Telephone  
 NUTLEY 2-0774 or NUTLEY 2-2777.  
 4-24

**3 BEDROOM COLONIAL.** Fine  
 condition. Oil Steam Heat. Cor-  
 ner lot. Near schools and buses.  
 Inspection by appointment. Order  
 Telephone Plymouth 9-2183. 5-8

### Help Wanted

**TEACHERS—ENJOYABLE**  
 AND PROFITABLE summer  
 work. Guaranteed income. Write  
 R. L. Mather, Box 25, Verona,  
 N. J. 4-24

**MEN OR WOMEN TO WORK**  
 three hours a day. Saturday  
 work optional. Telephone Ply-  
 mouth 9-4881. 5-8

**SHARPENING SERVICE.** Lawn  
 mowers \$2.50. Hand and power  
 saws. Clippers and other tools.  
 Chicago fair. Telephone Plymouth  
 9-3726. 38 Oak Street, Belleville.  
 5-8

**Help Wanted Female**  
**PART TIME FOUNTAIN GIRL**  
 with experience. Call after 2  
 P.M. Plymouth 9-9854. 5-8

**ACCOUNTING CLERK**  
**GENERAL ACCOUNTING**  
**EXPERIENCE.** \$600.00 to  
 \$700.00. No experience neces-  
 sary. Excellent salary and ben-  
 efits. Liberal employee benefits. The  
 Andrew Jackson Company, 1  
 Franklin Ave., Belleville. Tele-  
 phone Plymouth 9-4240. 5-8

**NEW LAWS MADE AND**  
 old laws reconditioned. And old  
 cement work. Free Estimates.  
 Dimichine. Telephone NUTLEY  
 2-4780. 4-24

**Junk Dealers**  
**'RANK'S SALVAGE**—Pick up  
 paper, rags, metal, metal  
 scrap, stoves, bathtubs and fur-  
 naces. Clean callars. Telephone  
 Plymouth 9-2612. 3-15-57 TF

**ATTENTION!** We pay top prices  
 for rags, iron, scrap metal,  
 batteries. Papers 50¢ per hundred  
 delivered. We pick up. J. Resci-  
 nelli, 35 Clinton Street, Belleville.  
 Telephone Plymouth 9-4408. 11-14-58 TF

**ALWAYS PAYING TOP DOL-**  
**LARS:** rags, 2½¢ lb; iron,  
 brass, copper, metals. Singer sea-  
 wing machine, furnaces, papers,  
 50¢ per 100 lbs. Immediate pick  
 up. Kenney Scrap Metal, 17 Stover  
 Avenue, Kearny, Wyman 1-0482.  
 TF

**Lawn Mowers**  
**BRING THIS AD** with you and  
 save. Free on Lawn Mower re-  
 pairing and sharpening. April  
 only. Pickup and delivery. Tele-  
 phone North 1-0410. Wilcox Oaks  
 Hardware Company, 78 Union  
 Avenue Nutley. 4-24

**Oil Burners**  
**WELTZ FUEL OIL**, 221 Prospect  
 Avenue North Arlington, N. J.  
 Oil burners, fuel oil. Complete  
 automatic oil heating installations.  
 Oil burner efficiency our special-  
 ty. Kearny 2-5627. TF

**Plumbing & Heating**  
**P. O. PLUMBING & HEATING.**  
 Gas-fired boilers and hot water  
 heaters. Free estimates. Telephone  
 Plymouth 1-0279. 10-1-57 TF

**K & P PLUMBING & HEATING.**  
 Gas-fired boilers and hot water  
 heaters. Free Estimates. Tele-  
 phone Plymouth 1-0279. 10-1-57 TF

**Printing**  
 The finest of printing. Com-  
 mercial or social and personal,  
 is produced in our own plant,  
 reasonable in price for quality  
 work, crafted by experienced  
 master printers, speedily deliv-  
 ered. The Belleville Times, 328  
 Washington Avenue. Call us for  
 prices or samples. Plymouth 9-  
 3200. 5-8

**Recipirs**  
**ALUMINUM WINDOW AND**  
**DOOR.** storm sash and screens  
 repaired. Jay Aluminum Company.  
 Pick up and deliver. Work on  
 closed our specialty. Telephone  
 Plymouth 9-8378. 4-24

**OUR CLASSIFIED ADS**  
**BRING QUICK RESULTS**

### Roofers

**DELL'S HOME REMODELING.**  
 Roofing, siding alterations. Call  
 Dell's for free estimates. No job  
 too small. Resident telephone  
 Plymouth 1-1289, 192 Washing-  
 ton Avenue, PL 9-5282. 1-3-58 TF

**IF YOUR ROOF LEAKS CALL**  
**ALFRED HARRISON**, roof ex-  
 pert. Insiders and gutters installed.  
 All kinds of roof repairs, chimney  
 repairs and slate repairs. 815  
 Chestnut Street, Kearny or tele-  
 phone Kearny 2-5495 or Kearny  
 2-3319. TF

### Wanted To Rent

**YOUNG COUPLE 1 CHILD** want  
 apartment 4 or 5 rooms, in  
 Belleville. Telephone Plymouth  
 9-5065. 5-8

### Tile Contractors

**TILE WORK DONE REASON-**  
 able. Bathrooms, kitchen and  
 plaster floors; ceramic, asphalt,  
 rubber, vinyl. Ceiling blocks re-  
 newed. Also "do it yourself kits".  
 John Forte, call NUTLEY 2-0253  
 Street 2-6589. TF

### Work Wanted

**IMPROVE YOUR PROPERTY.**  
 New sidewalks and repairs.  
 New lawns and repairs. All labor  
 and trucking. V. Sempio,  
 79 Carner Avenue, Belleville,  
 N. J. Telephone Plymouth 9-  
 5859. 3-15-57 U

**ODD JOBS DONE.** Junk dealer.  
 Pickup service. Yards and cel-  
 lars cleaned. A. Dimichine, 40  
 Washington Avenue, Nutley—  
 telephone NUTLEY 2-3041. 10-24-58 TF

**WIRE FENCES installed.** Andrew  
 Dimichine, 45 Cuzzo Street, Bel-  
 leville. Telephone Nutley 9-  
 6034. TF

**YOUNG WOMAN WISHES TO**  
**DO TYING** at home. Experi-  
 enced in office work. Telephone  
 Plymouth 9-7385. 5-1

**FULLY EXPERIENCED STENO-**  
**GRAPHER** desires work at  
 home. Own new Royal. Willing  
 to type any correspondence. Pick  
 up and delivery Nutley-Belleville.  
 Four hours a day. NUTLEY 2-7232.  
 5-1

**ODD JOBS, RUBBISH AND**  
**DIRTY REMOVED.** Collars and  
 yards cleaned. Dump truck to hire.  
 Telephone Plymouth 2-5921. 5-29

**'RANK'S SALVAGE**—Pick up  
 paper, rags, metal, metal  
 scrap, stoves, bathtubs and fur-  
 naces. Clean callars. Telephone  
 Plymouth 9-2612. 3-15-57 TF

**ATTENTION!** We pay top prices  
 for rags, iron, scrap metal,  
 batteries. Papers 50¢ per hundred  
 delivered. We pick up. J. Resci-  
 nelli, 35 Clinton Street, Belleville.  
 Telephone Plymouth 9-4408. 11-14-58 TF

**ALWAYS PAYING TOP DOL-**  
**LARS:** rags, 2½¢ lb; iron,  
 brass, copper, metals. Singer sea-  
 wing machine, furnaces, papers,  
 50¢ per 100 lbs. Immediate pick  
 up. Kenney Scrap Metal, 17 Stover  
 Avenue, Kearny, Wyman 1-0482.  
 TF

**Lawn Mowers**  
**BRING THIS AD** with you and  
 save. Free on Lawn Mower re-  
 pairing and sharpening. April  
 only. Pickup and delivery. Tele-  
 phone North 1-0410. Wilcox Oaks  
 Hardware Company, 78 Union  
 Avenue Nutley. 4-24

**Oil Burners**  
**WELTZ FUEL OIL**, 221 Prospect  
 Avenue North Arlington, N. J.  
 Oil burners, fuel oil. Complete  
 automatic oil heating installations.  
 Oil burner efficiency our special-  
 ty. Kearny 2-5627. TF

**Plumbing & Heating**  
**P. O. PLUMBING & HEATING.**  
 Gas-fired boilers and hot water  
 heaters. Free estimates. Telephone  
 Plymouth 1-0279. 10-1-57 TF

**K & P PLUMBING & HEATING.**  
 Gas-fired boilers and hot water  
 heaters. Free Estimates. Tele-  
 phone Plymouth 1-0279. 10-1-57 TF

**Printing**  
 The finest of printing. Com-  
 mercial or social and personal,  
 is produced in our own plant,  
 reasonable in price for quality  
 work, crafted by experienced  
 master printers, speedily deliv-  
 ered. The Belleville Times, 328  
 Washington Avenue. Call us for  
 prices or samples. Plymouth 9-  
 3200. 5-8

**Recipirs**  
**ALUMINUM WINDOW AND**  
**DOOR.** storm sash and screens  
 repaired. Jay Aluminum Company.  
 Pick up and deliver. Work on  
 closed our specialty. Telephone  
 Plymouth 9-8378. 4-24

**OUR CLASSIFIED ADS**  
**BRING QUICK RESULTS**

### Pesa Speaks At Institute

Ludwig Pesa, of 226 Floyd  
 Street, chief pharmacist at St.  
 Mary's Hospital, Passaic, spoke on  
 "Pharmacy's Role in Disaster  
 Planning" at an institute on disaster  
 planning for hospitals this  
 week in Detroit.

The institute is sponsored by the  
 Catholic Hospital Association of the  
 United States and Canada, De-  
 partment of Continuing Education.

Pesa, a graduate of Rutgers Uni-  
 versity College of Pharmacy, is  
 chairman of the committee on dis-  
 aster preparedness, American So-  
 ciety of Hospital Pharmacists, and  
 author of many articles on disaster  
 preparedness for professional  
 journals.

He is a past president of both  
 the New Jersey Society of Hos-  
 pital Pharmacists and the Ameri-  
 can Pharmaceutical Association.

Pesa also serves as Lieutenant  
 Commander in the Reserve  
 Corps of the U. S. Public Health  
 Service.

Pesa's talk dealt with medica-  
 tions necessary to the early man-  
 agement of mass casualty initial  
 inventory needs; replenishment of  
 supplies; recruitment of extra  
 pharmacy skills; and organization  
 of the pharmacy function.

**SHERIFF'S SALE**  
**SUPERIOR (GRASS) CASH**  
**CHANDLER DIVISION, TEXAS COUN-**  
**TY, Docket No. 2-1867-3, DeWitt**  
**De Witt Savings and Loan Association,**  
**New Jersey Corporation, Plaintiff,**  
**and Henry A. Taylor and Minnie H. Tay-**  
**lor, Joint Defendants, vs. Superior**  
**Sale of Mortgages Provided for**  
 by virtue of and above stated con-  
 tract of mortgage, to wit: Sheriff's  
 Sale for Sale by Public Vendor in  
 Room B-14 of the Court House, in  
 Newark on Thursday, the nineteenth  
 day of April at 1:30 P.M. (over-  
 riding time), all the following real  
 estate and all proceeds therefrom  
 after particularly described, situate,  
 lying and being in the Town of Bel-  
 leville, Essex County, New Jersey:

1. A certain lot in the safety line of  
 Adelaide Street at a point therein sit-  
 uate 24 feet northerly from the corner  
 formed by the intersection of the said  
 safety line of Adelaide Street with the  
 north line of Division Avenue, be-  
 tween (1) north 49 degrees 15 minutes  
 east 100 feet, thence (2) north 49  
 degrees 15 minutes east 25 feet; thence  
 (3) south 49 degrees 15 minutes west  
 100 feet to said westerly line of Adelaide  
 Street and thence (4) south 29 degrees  
 45 minutes west 100 feet to said westerly  
 line of Adelaide Street 25 feet to the  
 point and place of beginning.

Being herein and designated as Real  
 Estate No. 1, situate in the Town of Bel-  
 leville, Essex County, New Jersey.

2. A certain lot in the safety line of  
 Adelaide Street at a point therein sit-  
 uate 24 feet northerly from the corner  
 formed by the intersection of the said  
 safety line of Adelaide Street with the  
 north line of Division Avenue, be-  
 tween (1) north 49 degrees 15 minutes  
 east 100 feet, thence (2) north 49  
 degrees 15 minutes east 25 feet; thence  
 (3) south 49 degrees 15 minutes west  
 100 feet to said westerly line of Adelaide  
 Street and thence (4) south 29 degrees  
 45 minutes west 100 feet to said westerly  
 line of Adelaide Street 25 feet to the  
 point and place of beginning.

Being herein and designated as Real  
 Estate No. 2, situate in the Town of Bel-  
 leville, Essex County, New Jersey.

3. A certain lot in the safety line of  
 Adelaide Street at a point therein sit-  
 uate 24 feet northerly from the corner  
 formed by the intersection of the said  
 safety line of Adelaide Street with the  
 north line of Division Avenue, be-  
 tween (1) north 49 degrees 15 minutes  
 east 100 feet, thence (2) north 49  
 degrees 15 minutes east 25 feet; thence  
 (3) south 49 degrees 15 minutes west  
 100 feet to said westerly line of Adelaide  
 Street and thence (4) south 29 degrees  
 45 minutes west 100 feet to said westerly  
 line of Adelaide Street 25 feet to the  
 point and place of beginning.

Being herein and designated as Real  
 Estate No. 3, situate in the Town of Bel-  
 leville, Essex County, New Jersey.

4. A certain lot in the safety line of  
 Adelaide Street at a point therein sit-  
 uate 24 feet northerly from the corner  
 formed by the intersection of the said  
 safety line of Adelaide Street with the  
 north line of Division Avenue, be-  
 tween (1) north 49 degrees 15 minutes  
 east 100 feet, thence (2) north 49  
 degrees 15 minutes east 25 feet; thence  
 (3) south 49 degrees 15 minutes west  
 100 feet to said westerly line of Adelaide  
 Street and thence (4) south 29 degrees  
 45 minutes west 100 feet to said westerly  
 line of Adelaide Street 25 feet to the  
 point and place of beginning.

Being herein and designated as Real  
 Estate No. 4, situate in the Town of Bel-  
 leville, Essex County, New Jersey.

5. A certain lot in the safety line of  
 Adelaide Street at a point therein sit-  
 uate 24 feet northerly from the corner  
 formed by the intersection of the said  
 safety line of Adelaide Street with the  
 north line of Division Avenue, be-  
 tween (1) north 49 degrees 15 minutes  
 east 100 feet, thence (2) north 49  
 degrees 15 minutes east 25 feet; thence  
 (3) south 49 degrees 15 minutes west  
 100 feet to said westerly line of Adelaide  
 Street and thence (4) south 29 degrees  
 45 minutes west 100 feet to said westerly  
 line of Adelaide Street 25 feet to the  
 point and place of beginning.

Being herein and designated as Real  
 Estate No. 5, situate in the Town of Bel-  
 leville, Essex County, New Jersey.

6. A certain lot in the safety line of  
 Adelaide Street at a point therein sit-  
 uate 24 feet northerly from the corner  
 formed by the intersection of the said  
 safety line of Adelaide Street with the  
 north line of Division Avenue, be-  
 tween (1) north 49 degrees 15 minutes  
 east 100 feet, thence (2) north 49  
 degrees 15 minutes east 25 feet; thence  
 (3) south 49 degrees 15 minutes west  
 100 feet to said westerly line of Adelaide  
 Street and thence (4) south 29 degrees  
 45 minutes west 100 feet to said westerly  
 line of Adelaide Street 25 feet to the  
 point and place of beginning.

Being herein and designated as Real  
 Estate No. 6, situate in the Town of Bel-  
 leville, Essex County, New Jersey.

7. A certain lot in the safety line of  
 Adelaide Street at a point therein sit-  
 uate 24 feet northerly from the corner  
 formed by the intersection of the said  
 safety line of Adelaide Street with the  
 north line of Division Avenue, be-  
 tween (1) north 49 degrees 15 minutes  
 east 100 feet, thence (2) north 49  
 degrees 15 minutes east 25 feet; thence  
 (3) south 49 degrees 15 minutes west  
 100 feet to said westerly line of Adelaide  
 Street and thence (4) south 29 degrees  
 45 minutes west 100 feet to said westerly  
 line of Adelaide Street 25 feet to the  
 point and place of beginning.

Being herein and designated as Real  
 Estate No. 7, situate in the Town of Bel-  
 leville, Essex County, New Jersey.

8. A certain lot in the safety line of  
 Adelaide Street at a point therein sit-  
 uate 24 feet northerly from the corner  
 formed by the intersection of the said  
 safety line of Adelaide Street with the  
 north line of Division Avenue, be-  
 tween (1) north 49 degrees 15 minutes  
 east 100 feet, thence (2) north 49  
 degrees 15 minutes east 25 feet; thence  
 (3) south 49 degrees 15 minutes west  
 100 feet to said westerly line of Adelaide  
 Street and thence (4) south 29 degrees  
 45 minutes west 100 feet to said westerly  
 line of Adelaide Street 25 feet to the  
 point and place of beginning.

Being herein and designated as Real  
 Estate No. 8, situate in the Town of Bel-  
 leville, Essex County, New Jersey.

9. A certain lot in the safety line of  
 Adelaide Street at a point therein sit-  
 uate 24 feet northerly from the corner  
 formed by the intersection of the said  
 safety line of Adelaide Street with the  
 north line of Division Avenue, be-  
 tween (1) north 49 degrees 15 minutes  
 east 100 feet, thence (2) north 49  
 degrees 15 minutes east 25 feet; thence  
 (3) south 49 degrees 15 minutes west  
 100 feet to said westerly line of Adelaide  
 Street and thence (4) south 29 degrees  
 45 minutes west 100 feet to said westerly  
 line of Adelaide Street 25 feet to the  
 point and place of beginning.

Being herein and designated as Real  
 Estate No. 9, situate in the Town of Bel-  
 leville, Essex County, New Jersey.

10. A certain lot in the safety line of  
 Adelaide Street at a point therein sit-  
 uate 24 feet northerly from the corner  
 formed by the intersection of the said  
 safety line of Adelaide Street with the  
 north line of Division Avenue, be-  
 tween (1) north 49 degrees 15 minutes  
 east 100 feet, thence (2) north 49  
 degrees 15 minutes east 25 feet; thence  
 (3) south 49 degrees 15 minutes west  
 100 feet to said westerly line of Adelaide  
 Street and thence (4) south 29 degrees  
 45 minutes west 100 feet to said westerly  
 line of Adelaide Street 25 feet to the  
 point and place of beginning.

Being herein and designated as Real  
 Estate No. 10, situate in the Town of Bel-  
 leville, Essex County, New Jersey.

11. A certain lot in the safety line of  
 Adelaide Street at a point therein sit-  
 uate 24 feet northerly from the corner  
 formed by the intersection of the said  
 safety line of Adelaide Street with the  
 north line of Division Avenue, be-  
 tween (1) north 49 degrees 15 minutes  
 east 100 feet, thence (2) north 49  
 degrees 15 minutes east 25 feet; thence  
 (3) south 49 degrees 15 minutes west  
 100 feet to said westerly line of Adelaide  
 Street and thence (4) south 29 degrees  
 45 minutes west 100 feet to said westerly  
 line of Adelaide Street 25 feet to the  
 point and place of beginning.

Being herein and designated as Real  
 Estate No. 11, situate in the Town of Bel-  
 leville, Essex County, New Jersey.

12. A certain lot in the safety line of  
 Adelaide Street at a point therein



## The Belleville Times

FRANK A. ORECHIO, Publisher  
ADVERTISING, NEWS AND BUSINESS OFFICE  
125 WASHINGTON AVENUE  
Francis Jones, News Editor

## Spring

Now fades the last long streak of snow,  
Now burgeons every maze of quick  
About the flowering squares, and thick  
By ashen mists the violets blow.

Now rings the woodland loud and long,  
The distance takes a lovelier hue,  
And drowned in yonder living blue  
The lark becomes a sightless song.

Now dance the lights on lawn and lea,  
The flocks are whiter down the vale,  
And milkier every milky sail,  
On winding stream or distant sea;  
Where now the seaweed pipes, or dives,  
In yonder greening gleam, and fly  
The happy birds, that change their sky  
To build and brood, that live their lives.

From land to land; and in my breast  
Spring wakens too; and my regret  
Becomes an April violet,  
And buds and blossoms like the rest.

Alfred, Lord Tennyson

## The Innocent Suffer

One of the more vicious aspects of a controversy such as the recent one involving the Board of Education is that, like a malignant disease, it spreads and affects individuals who were in no way involved. In this particular instance, not only an individual, but a very worthwhile cause has been innocently dragged into the repercussions of the affair. Officials of the Clara Maass Memorial Hospital School of Nursing fund drive have reported numerous resignations of volunteer workers in the campaign for the sole

reason that they do not want to work under certain leaders of their particular groups because of their connection with the School Board itself or with the controversy.

In other words, personalities and selfish interests have again been allowed to take precedence over a cause that would be of unquestioned benefit to the community. Simply because a few people would like to see individuals to whom they are politically opposed fail in their efforts on behalf of the drive, and thereby apparently lose prestige, must an entire cause be sacrificed? Can't politics be excluded even from human charity?

Thus, we would ask the majority of people, who cannot help but be disgusted at such a warping of human values, to join in building a solid team of willing volunteers who will put this needed effort over the top. The time must be taken to work and to help prevent the spreading of an attitude that, if unchecked, can break down an entire society.

F.J.J.

## CD Volunteers Thinking Of You

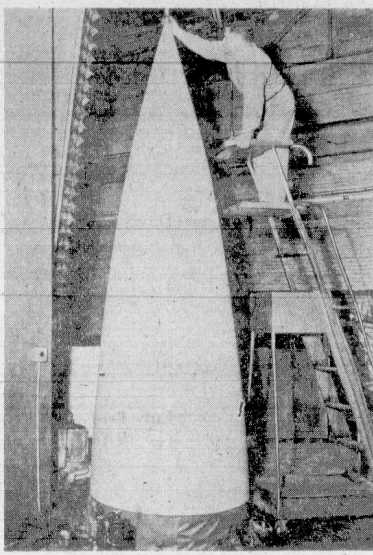
"Operation Alert 1959" was carried out successfully in Belleville last week, as the town's Civil Defense organization, headed by Henry Minasian spent many hours of planning for the drill.

All traffic came to a halt and people were told to take shelter. To many of them it seemed like a waste of time and a joke. To the Civil Defense aides, however, who give up much of their spare time and receive no remuneration, it is far from a joke.

These men are out to save your lives in the event of an enemy attack. Many skeptics are quick to ask, "What chance would we have in this Atomic Age?"

There is no question about it, there would be a tremendous loss of life, but with an alert and well-trained Civil Defense group taking charge, the chances for survival are greatly increased. These people know what to do in the event of disaster; so listen to their advice.

CD volunteers are thinking of you — help them to help yourself.



This huge fiberglass radome was fabricated by Walter Kidde & Company, Inc. for use on a military plane. It measures approximately 12' long, 4' diameter (at base) and weighs about 350 pounds. A new technique was developed by Kidde for winding continuous fiberglass filament to create the radome. Plastic impregnated fiberglass filaments are wound on a radome form or mandrel and then heat cured. This results in a radome which has an extremely high strength to weight ratio and the maximum in physical and electrical uniformity. The radome is shown before the application of a protective rain erosion coating. It is believed to be the largest fiberglass radome ever built by the filament-wound process.

In the high school girls leagues Janet Sloan rolled the high total pins, Sandy Wilson held the high game, Carol Brand also a double winner, held the high average and girls bowled at the Elks Club high two — game series. These were Monday afternoon.

A large percentage of accidental deaths and injuries among children are directly traceable to inattention, even negligence, on the part of parents, according to the Institute for Safer Living of the American Mutual Liability Insurance Company. Changes of this neglect increase during spring months when added household and other activities claim more attention from parents.

The belief that polo is a "dis-ease of the past" may be keeping people from getting their full share of Salk injections, says Health Information Foundation. Only about half the U. S. population under age 40 had been fully vaccinated by the beginning of 1959.

Thin steel or brass collars for men, enamelled white and easily cleaned with a damp cloth, actually were offered for sale around 1490, reports the N. Y. Antiques Fair to be held April 15-18. Few takers, probably, for they would make for "comfort" that was just too solid.

## Softball Loop To Start Play

Commissioner George F. Kierman announced this week that the Recreation Department will once again sponsor the Industrial Softball League.

The League, this year, will boast eight teams which will play 20 rounds. All of the games will be played at Belleville Park on the Essex County Park Commission's grounds.

Tenacious in this year's League will be Federal Industries, Walter Kidde, Wilbur Driver, Pittsburgh Plate Glass, Squire, Schilling and Skiff; Wallace & Tiernan; Shaw Walker; and Wise Cutlery. Robert E. Cook will be the League director and William Shisell will again serve as League treasurer.

Beware of open or unguarded windows when the weather turns warm advises the Institute for Safer Living. Falls from unprotected windows or porches lead most other types of serious or fatal accidents to children under five years of age.

There are scores of different ways in which children are accidentally injured every day according to studies made by the Institute for Safer Living of the American Mutual Liability Insurance Company. Some warm weather child injury precautions include providing sturdy screens for windows and porches, safely storing all dangerous household objects and poisons and providing safe outdoor play areas.

"If this country reaches the point where our people consider speculation safe and saving a gamble, we're in for real trouble."

— Secretary of the Treasury Robert B. Anderson.

## EYES EXAMINED

DR. J. G. ANDERTEN  
Optometrist

Office hours Monday to Saturday 2 to 5 p.m. in the afternoon, 7 to 9 p.m. in the evening. Closed Wednesday. By appointment.

94 Rossmore Place, Belleville.  
Telephone PLymouth 9-1685

## Recreation Bulletin

**Today**  
9:15 a.m. - Preschool play program - Recreation House.  
3:30 p.m. - Jr. Barbell Club - Stadium.  
5:30 p.m. - Kiwanis Elementary School Boys Bowling League - Branch Brook Lakes.  
6:30 p.m. - Women's Bowling League - Branch Brook Lakes.  
7:30 p.m. - Senior Barbell Club - Stadium.  
8:00 p.m. - Scorekeeper class - Recreation House.

**Monday**  
9:15 a.m. - Preschool play program - Recreation House.  
1:00 p.m. - Monday afternoon swimming group - Recreation House.  
3:30 p.m. - Jr. Barbell Club - Stadium.  
7:30 p.m. - Sr. Barbell Club - Stadium.  
7:30 p.m. - Girls Rifle Club - Stadium.  
7:30 p.m. - Girls fencing - Belleville High School.

**Tuesday**  
9:15 a.m. - Preschool play program - Recreation House.  
3:30 p.m. - Jr. Barbell Club - Stadium.

President Eisenhower recently said he knew nothing in the whole economic structure of the United States that is more important for the ultimate benefit of the country than the U. S. Savings Bonds program. Without it, said the President, the job of managing the public debt would be "well-nigh impossible."

**"I found it fast!"**

for "flowers"...

Find it fast in the **YELLOW PAGES**

The handy Yellow Pages tell you "who sells" anything!

**Stadium**  
7:00 p.m. - Sr. Barbell Club - Stadium.  
7:00 p.m. - Boys Jr. Rifle Club - Stadium.  
8:00 p.m. - Druggist Druggists - Recreation House.

**Wednesday**  
9:15 a.m. - Preschool play program - Recreation House.  
3:30 p.m. - Jr. Barbell Club - Stadium.  
5:30 p.m. - Kiwanis Elementary School Boys Bowling League - Branch Brook Lakes.  
7:00 p.m. - Cad fencing - Friendly House.  
7:30 p.m. - Sr. Barbell Club - Stadium.

**Thursday**  
9:15 a.m. - Preschool play program - Recreation House.  
7:00 p.m. - Jr. Barbell Club - Stadium.

**FRANKLIN**  
NUTLEY, N.J. 07033

Starts Tomorrow!  
Friday thru Thursday

U.S.G. presents  
A G.M.C. Picture, President Spring  
**FRANK SINATRA**  
**DEAN MARTIN**  
**SHIRLEY MACLAINE**  
**SOME CAME RUNNING**  
DOROTHY & GARY COOPER  
MARTHA HYER - ANTHONY QUINN  
NANCY GATES - CYRUS TUCKER

Plus Walt Disney's  
"Wet Back Hound"  
Big Sat. Matinee!  
Giant Full Length  
Technicolor Cartoon  
Feature! A Must!  
"Gulliver's Travels"  
Also Walt Disney's  
"Wet Back Hound"  
Also Randolph Scott  
Technicolor Action Hit  
"The Fighting Man"  
Starts Next Friday  
May 1st — 1 Full Week  
Walt Disney's  
"Shaggy Dog"  
Also James "Maverick" Garner  
"Up Periscope"

**SAVE with USED BUILDING MATERIALS**

Now You Can Start That Project Which Would Normally Be Prohibited by NEW Building Material Costs.

- FUEL OIL TANKS • PIPE
- CAST IRON SOIL PIPE
- PLUMBING • GAS RANGES
- OIL BURNERS
- SHEATHING • DOORS
- WINDOWS • I BEAMS
- LUMBER • FLOORING
- REFRIGERATORS
- Overhead GARAGE DOORS

**VAN KEUREN & SON**  
A Corporation, James Sammarco, Pres.  
New and Used Building Materials  
500 Passaic Ave., East Newark • HU 4-1400

**WORLD'S FIRST MUSIC THEATRE IN-THE-ROUND RESTAURANT**  
Dailey's MEADOWBROOK DINNERS THEATRE  
presents **ALLAN JONES** in  
**GUYS and DOLLS**  
Music & Lyrics by Frank Loesser Book by J. M. Barrie & Noel Coward  
NOW PLAYING  
Broadway musical comedy hit  
Full course dinner  
Dancing to two orchestras  
ALL FOR 350 UP  
Route 23, Cedar Grove, N. J. (2 miles so. of route 46)  
SPECIAL GROUP RATES & PHONE RESERVATIONS: CLIFFORD 6-1455

Member American Camping Ass'n.  
**CAMP BELLE DAY CAMP**  
"In the Pocones Hills"  
FOR BOYS AND GIRLS  
TOTOWA BORO, N. J.  
Now In Its 19th Year

- Hot Home Cooked Meals Served Daily
- 73 Wounded Acres for our Exclusive Use
- Controlled Swimming Pool Where Swimming is Taught Under A. R. C. Instructors
- Variety of Activities Under Adult Supervision
- Large Pavilion for Roller Skating and Athletics
- Registration Limited
- Special Attention to Pre-school Groups

Reservations 4-8 Weeks •  
BELLE MYERS, B.S., M.A., Co-Director  
ANNE W. NACHIMSON, B.S.  
Literature Upon Request  
VISIT CAMP AND SEE FOR YOURSELF  
Call After 4:00 P. M.  
Barbara Rosenberg, PLymouth 9-4870

- Protect Yourself!
- Protect Your Dog!
- Protect Your Family!

# HAVE YOUR DOG VACCINATED TO CONTROL RABIES

This service is being rendered Free of Charge by  
the New Jersey State Department of Health, and  
Belleville Health Department, at the following clinics:

May 6th - Town Hall, Rear, - 6 to 8 P.M.

May 13th - Washington Ave. Fire house - 6 to 8 P.M.

May 20th - Silver Lake - Franklin St. Firehouse - 6 to 8 P.M.

EDWARD BURDZY

Health Officer

NUNCIO R. PICO

Director



# St. Mary's Church, Scene Of Mohan-Mickey Nuptials



Mrs. Arthur G. Mohan  
Miss Joan Catherine Mickey Is Bride Of Belleville Chemist In Ceremony Preceding Nuptial Mass

In a ceremony preceding a Nuptial Mass in St. Mary's Church, Nutley, Miss Joan C. Mickey and Arthur G. Mohan were united in marriage Saturday morning at 11 o'clock. The bride is the daughter of Mrs. Ralph S. Mickey, of 40 Shepard Place, Nutley, and the late Mr. Mickey. Her husband is the son of Mr. and Mrs. Arthur E. Mohan, of 17 Campbell Avenue.

The ceremony was performed by Rev. Gerard Walsh, of St. Mary's Church, Rev. Gaudens Mohan, O.F.M., uncle of the bridegroom, played the organ, and Mrs. J. J. Madden, Jr., sang. A reception followed at Peter Truck Inn, Cedar Grove.

The bride was given in marriage by her brother, Ralph E. Mickey, of Clifton. She wore a full length gown of Italian silk, with a bouffant skirt. The fitted bodice was trimmed with lace and seed pearls, outlining the round neck line.

A crown of seed pearls held her four-tier French illusion, finger-tip veil. She carried lilies and stephanotis on a wicker book.

Mrs. Robert Hilla, of Clifton, was matron of honor. Bridesmaids included Mrs. Robert Phalon, of Clifton, and Mrs. Mark Marich, of Rutherford.

The matron of honor was dressed in a gown of silk, with a full length skirt. She had a head-band, covered with sequins, with a circular veil.

The bridesmaids were attired in gowns like that of the honor at-

## State Commends BHS Pamphlet

To Belleville High School Pamphlet, "Planning Your Future Career," was commended in the April issue of the "Secondary School Bulletin," which is issued by the New Jersey State Department of Education.

The state publication, which attempts to present some of the better practices in New Jersey high schools, said in part that "it is an excellent example of co-ordination involving the Guidance Department, the Library, and the English Department." The pamphlet was edited by Samuel S. Belkin, guidance director in Belleville High.

Junior students in the High School are expected to work on their selection of a career. They are helped in this through the administration of the Kuder Preference Test which is interpreted with the students by their counselors. This is followed by an English project where they are expected to compile a "research paper" on their career choice. Here's where the library helps them with material in the various professional and vocational areas. These student selection are further used for grouping during career-conference and college selection.



This week has witnessed a community-wide canvass of the Jewish woman of North- ern Essex County by the Women's Division of the United Jewish Appeal of Essex County. In order to plan the canvass, a meeting was held recently at the home of Mrs. Seymour Persko, Belleville chairman. Those present included, seated left to right, Mesdames Nathan Weinstein, chairman North Essex area. Standing left to right: Mesdames Persko, William Abramson, Louis Sussman, chairman Kearny, Arlington, Nathan Brodskin, Jules Swick, Harris Geller and Morris Glassman.

# This --- Week

7:30 p.m. - Bingo games - St. Peters.  
8:00 p.m. - Spring Musical - Fewsmith Presbyterian Church.  
8:00 p.m. - Choral Society - St. Peters Church.  
8:15 p.m. - Senior Choir - Silver Lake Baptist Church.

**Sunday**  
6:30 p.m. - Fewsmith Jr. Westminister Fellowship - Fewsmith Presbyterian Church.  
7:30 p.m. - Fewsmith Sr. Westminister Fellowship - Fewsmith Presbyterian Church.

**Monday**  
2:00 p.m. - Guest Day - Womans Club.  
7:30 p.m. - O.E.S. Arone Chapter - Masonic Temple.  
8:00 p.m. - American Legion Post 105 - Legion Hall.  
8:00 p.m. - Belleville Chess Club - Recreation House.  
8:00 p.m. - R.P.O.E. Elks meeting - Elks Club.

**Tuesday**  
12:15 p.m. - Belleville Kiwanis-Bethany Lutheran Chh.  
8:00 p.m. - Court Santa Maria C. J. A. - St. Peters.  
8:00 p.m. - Petrean Club - St. Peter.  
8:45 p.m. - Hadassah - Belleville Nutley Chapter - Temple.

**Wednesday**  
9:45 a.m. - Art Department - Womans Club.  
10:40 a.m. to 4:00 p.m. - Career Dressing Unit - Womans Club.  
12:15 p.m. - Rotary Club - St. Pauls Methodist Church.  
3:45 p.m. - Fewsmith Jr. Choir - Fewsmith Presbyterian Church.  
8:00 p.m. - Amatur Teachers League - Friendship House.  
8:30 p.m. - Little League Managers - Recreation House.

**Thursday**  
12:00 Noon - Belleville Elks Club - For Hills.  
8:00 p.m. - C.Y.O. - St. Peters.  
8:00 p.m. - Fewsmith Sr. Choir - Fewsmith Presbyterian Church.  
8:00 p.m. - Varsity Club - American Legion Home.

## Dinner Set For Tuesday

Progressing steadily toward the goal of \$750,000 for a new Clara Maass Memorial Hospital school of nursing, the Advance Gifts Committee will kick-off their portion of the campaign Tuesday.

The Advance Gifts Committee headed by Archie C. Barbata, Nutley, is made up of over 200 business men throughout the hospital service area. The men will meet for an evening dinner gathering at Fox-Hills restaurant. Following the dinner, the workers will select pledge cards of those individual in the advance or special gifts category, whom they wish to call upon. Each man will be responsible for handling eight to ten pledges of some 2,000 prospects during a three-week period.

Each town is under the overall supervision of a town chairman. Chairmen are James D. Williams, Nutley; Frank Puleo, Bloomfield; Dominic A. Cundari, North Newark and John J. Noonan, Belleville.

"Our committee will be concerned with solicitation among wealthy individuals including such businesses as insurance companies," Barbata declared. "This is a three year pledge campaign, where individuals and companies will spread their gift over a three year period, divided in quarterly payments. Pledges will be in effect starting June 1, 1959 and extended over a three year period, touching four income tax years," he added.

Barbata also pointed out that the government makes substantial income tax savings possible to hospital building fund contributors. Instructions on this and other phases of selling will be given by campaign officials at the kick-off dinner.

## Wilson, Vanderhoff Receive Awards

Salesmen W. Wilson and L. Vanderhoff of the Ford agency of George H. Mead, Inc., of 190 Washington Avenue were presented with 300-500 club awards at a dinner dance Saturday evening at the Statler Hilton Hotel, New York.

The award presentations honored the top-ranking salesmen of 1958 in the New York-Ford district.

## Local Men At Seminar

Attending the Rutgers University seminar being held at the Essex House, Newark, are two local chiropractors, Dr. Melvin Gluckstein, of 400 Washington Avenue and Dr. Gilbert S. Crystal, of 881 Belleville Avenue.



## ADVERTISER AT WORK!

Whether it's to aid distraught mothers, busy retailers or manufacturers, advertising is ready with a helping hand. On the pages of this newspaper, right on through the classified, you'll see ads that are working hard to help advertisers sell their products or services.

Advertising helps by spreading the word throughout the length and breadth of the land. As more people are informed, more products are sold. The demand snowballs and causes greater production, resulting in constantly improved products at lower cost.

Nowhere else in the world is advertising used so effectively and extensively - and nowhere else is there such a high standard of living. Advertising helped to bring on this high standard of living. Thus, you are the one who benefits from advertising!

